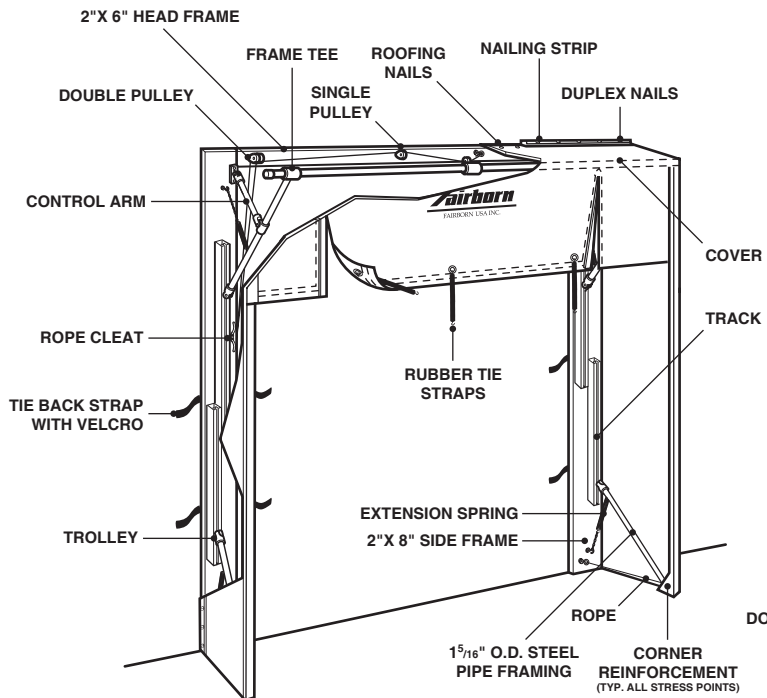
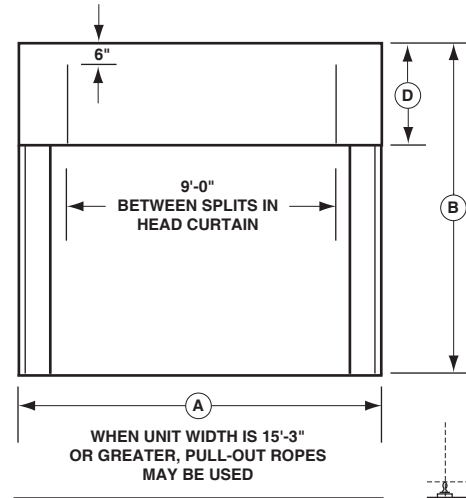
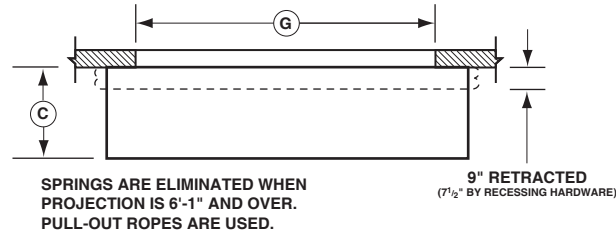


SERIES 4000 RAIL SHELTER

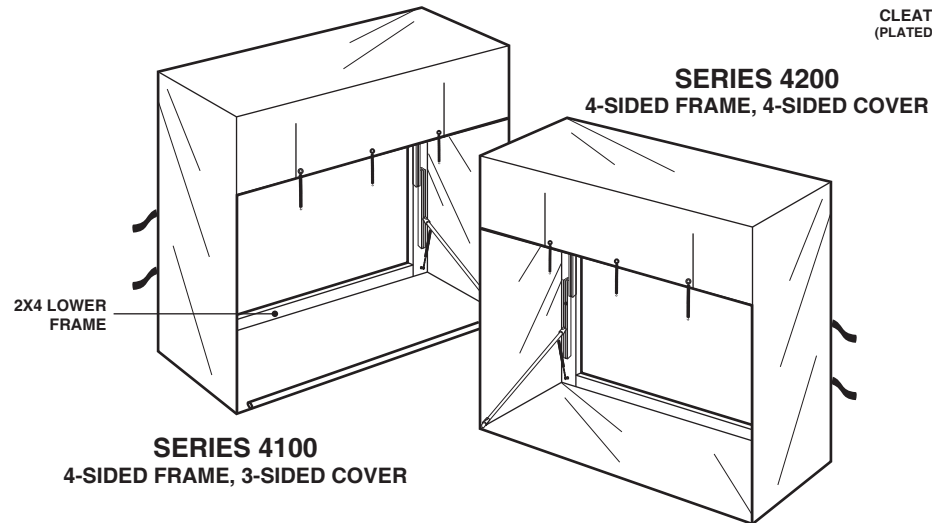
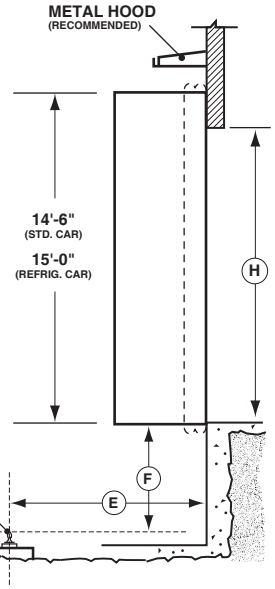
4000 4100 4200



SERIES 4000
3-SIDED FRAME, 3-SIDED COVER



PLAN VIEW



SERIES 4100
4-SIDED FRAME, 3-SIDED COVER

SERIES 4100 AND 4200: RECOMMENDED BOTTOM TO BE 1'-0" BELOW DOCK LEVEL

GENERAL INFORMATION

- "E" DISTANCE BETWEEN CENTER LINE NEAREST RAIL AND BUILDING FACE
- "F" DOCK HEIGHT FROM TOP OF RAIL
- "G" DOOR WIDTH
- "H" DOOR HEIGHT
- DISTANCE BETWEEN DOORS
- CLEARANCE ABOVE DOOR
- PERMANENT RAIL RAMP
- CANTILEVER DOCK
- HEIGHT _____ PROJ. _____
- OUTSIDE SLIDING DOCK DOOR

- FABRIC**
- 1001 1005 1008
 1004 1006
- UNIT DATA**
- "A" UNIT WIDTH (RECOMMENDED: 6" INCREMENTS)
(MUST BE AT LEAST 16" GREATER THAN DOOR OPENING WIDTH)

"B" UNIT HEIGHT

- (RECOMMENDED: 6" INCREMENTS)
(MUST BE AT LEAST 12" GREATER THAN PROJECTION)
(MUST BE AT LEAST 6" GREATER THAN DOOR OPENING - 4000 SERIES)
(MUST BE AT LEAST 18" GREATER THAN DOOR OPENING - 4100 AND 4200 SERIES IF MOUNTED 12" BELOW DOCK LEVEL AS RECOMMENDED)

"C" UNIT PROJECTION

- (DETERMINED BY SUBTRACTING 2" FROM DISTANCE BETWEEN CENTER LINE NEAREST RAIL AND BUILDING FACE)

"D" HEAD CURTAIN LENGTH

- (RECOMMENDED: 11'-0" FROM TOP OF RAIL TO BOTTOM OF CURTAIN)

OPTIONAL EQUIPMENT

- FORMED STEEL FRAMING (MIN. 14 GAUGE)
 - PAINTED
 - GALVANIZED
- RECESSED HARDWARE
- PULL ROPE ASSEMBLY & HEAD CURTAIN
- COVERED FOAM FACE
- NON-ROT WOOD PRESERVATIVE
- BLOW OUT BOTTOM (SERIES 4200 ONLY)



P.O. BOX 151 • 205 BROADVIEW STREET
UPPER SANDUSKY, OHIO 43351
800-262-1188 • 419-294-4987 • FAX: 419-294-4980
VISIT US AT... WWW.FAIRBORNUSA.COM

JOB: _____

LOCATION: _____

CONTRACTOR: _____ **ARCHITECT:** _____

APPROVED BY SIGNATURE: _____